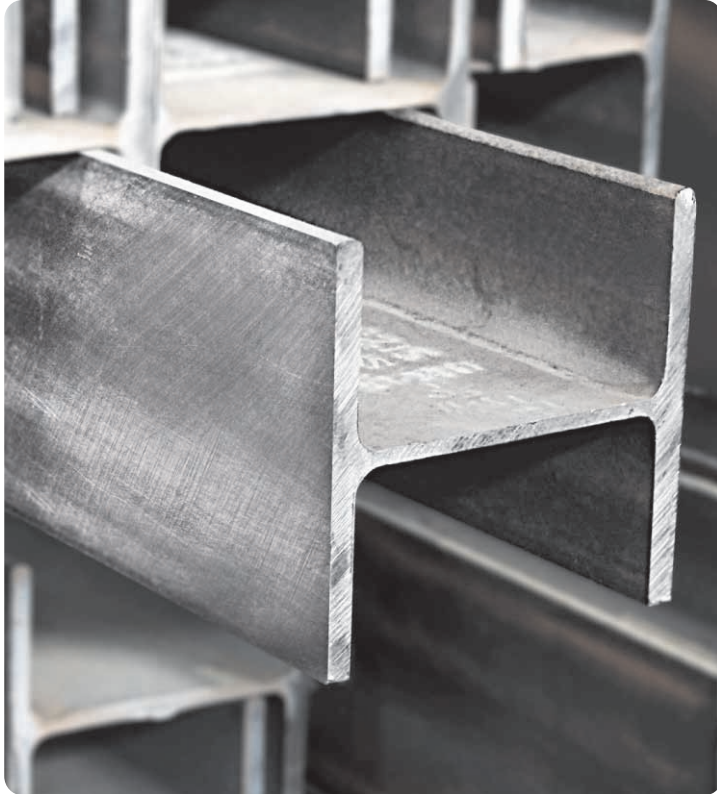


## H-BEAM



H-Beam is another product coming out from our hot rolled mill. It is the structural steel profile shaped like an H in section. The horizontal elements of the "I" are flanges, while the vertical element is the web. The web resists shear forces while the flanges resist most of the bending moment experienced by the beam. Beam theory shows that the H-shaped sections is a very efficient form for carrying both bending and shear loads in the plane of the web.

H-beams are widely used in the construction industry and are available in a variety of standard sizes. H-beams may be used both as beams and as columns.

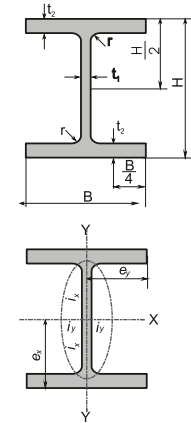
Gunung Garuda's hot rolled H-Beam comes with standard size range from 100x100 up to 350x350. Non standard H-Beam can be fabricated by welding steel plates together to form a welded beam that fits our customer's size requirements. We also provides free cut-to-length service for customers that required length below our standard length of 12m.

Size range	: 100x100 to 350x350
Standard length	: 12m
Flange thickness range	: 6mm to 12mm
Web thickness range	: 8mm to 19mm
Annual Capacity	: > 1.000.000 MT/Y
Standards	: JIS G 3101 SS400 (Mild Steel) JIS G 3101 SS540 (High Strength)

# H-BEAM

Metric Size | JIS 3192

STANDARD SECTIONAL DIMENSIONS				SECTION AREA A	UNIT WEIGHT		INFORMATIVE REFERENCE						REMARKS
H x B mm x mm	t1 mm	t2 mm	r mm				GEOMETRICAL MOMENT OF INERTIA		RADIUS OF GYRATION OF AREA		MODULUS OF SECTION		
				lx cm <sup>4</sup>	ly cm <sup>4</sup>	ix cm	iy cm	Zy cm <sup>3</sup>	Zy cm <sup>3</sup>				
100 x 100	6	8	10	21.90	17.20	206	383	134	4.18	2.47	76.5	26.7	
125 x 125	6.5	9	10	30.31	23.80	286	847	293	5.29	3.11	136	47	
150 x 150	7	10	11	40.14	31.50	378	1 640	563	6.39	3.75	219	75.1	
175 x 175	7.5	11	12	51.21	40.20	482	2 880	984	7.50	4.38	330	112	
200 x 200	8	12	13	63.53	49.90	599	4 720	1 600	8.62	5.02	472	160	
250 x 250	9	14	16	92.18	72.40	869	10 800	3 650	10.8	6.29	867	292	
300 x 300	10	15	18	119.80	94	1128	20 400	6 750	13.1	7.51	1 360	450	
350 x 350	12	19	20	173.9	137	1644	40 300	13 600	15.2	8.84	2 300	776	



NOTE : Non standard sizes are available upon request and subject to minimum quantity