

# Compact 10



## Technical Data

Working height (m)	10,15
Platform height (m)	8,15
Lift capacity (kg)	450
Platform size - extended (m)	3,22 x 1,2 m
Height - stowed (m)	2,26
Storage height	1,40
Overlall width (m)	1,20
Length (m)	2,45
Lift / lower speed (s)	51 s / 42 s
Drive speed (km/h)	1 - 3,5 km/h
Turning radius - outside (m)	2,50
Gradeability (%)	23
Tires - non marking	15 x 5
Power source	24 V - 255 Amp/h
Weight (kg)	2330

# Compact 10N



## Technical Data

Working height (m)	10
Platform height (m)	8
Lift capacity (kg)	230
Platform size - extended (m)	3,22 x 0,8 m
Height - stowed (m)	2,17
Storage height	1,33 m
Overall width (m)	0,81
Length (m)	2,48
Lift / lower speed (s)	51 s / 42 s
Drive speed (km/h)	1 - 3,5 km/h
Turning radius - outside (m)	2,38
Gradeability (%)	23
Tires - non marking	15 x 5
Power source	24 V - 185 Amp/h
Weight (kg)	2160

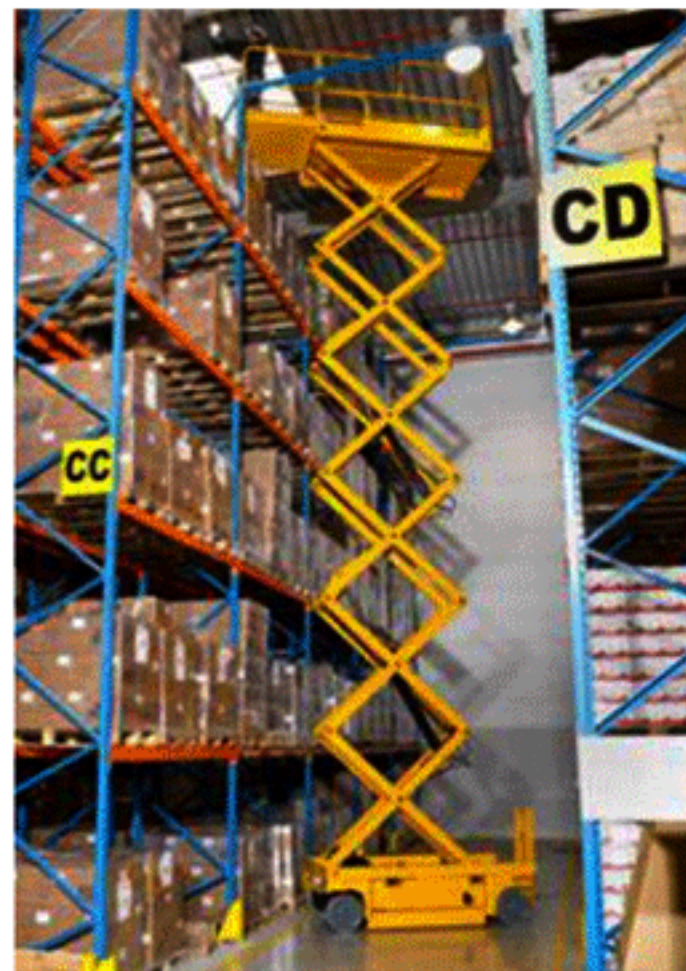
# Compact 12 RTE



## Technical Data

Working height (m)	10,2
Platform height (m)	8,20
Lift capacity (kg)	565
Platform size - extended (m)	3,7 x 1,54 m
Height - stowed (m)	2,42
Storage height	1,50
Overall width (m)	1,80
Length (m)	2,65
Lift / lower speed (s)	40 s / 35 s
Drive speed (km/h)	2,2 - 5,8 km/h
Turning radius - outside (m)	3,73
Gradeability (%)	25
Tires - non marking	26 x 12 - 12
Power source	48 V - 255 Amp/h
Weight (kg)	3380

# Compact 14



## Technical Data

Working height (m)	14
Platform height (m)	12
Lift capacity (kg)	350
Platform size - extended (m)	3,22 x 1,2 m
Height - stowed (m)	2,08
Storage height	2,5
Overall width (m)	1,2
Length (m)	2,45
Lift / lower speed (s)	68 s / 54 s
Drive speed (km/h)	0,9 - 3 km/h
Turning radius - outside (m)	2,5
Gradeability (%)	23
Tilt (°)	2° / 3°
Tires - non marking	15 x 5
Power source	24V - 255 Amp/h
Weight (kg)	3170

# Compact 8



## Technical Data

Working height (m)	8,2
Platform height (m)	6,20
Lift capacity (kg)	350
Platform size - extended (m)	3,22 x 0,8 m
Height - stowed (m)	2
Storage height	2
Overll width (m)	0,81
Length (m)	2,48
Lift / lower speed (s)	41 s / 37 s
Drive speed (km/h)	1 - 3,5 km/h
Turning radius - outside (m)	2,38
Gradeability (%)	25
Tires - non marking	15 x 5
Power source	24 V - 185 Amp/h
Weight (kg)	1730

# Compact 8W



## Technical Data

Working height (m)	8,25
Platform height (m)	6,25
Lift capacity (kg)	450
Platform size - extended (m)	3,22 x 1,2 m
Height - stowed (m)	2,14
Storage height	1,28
Overall width (m)	1,20
Length (m)	2,45
Lift / lower speed (s)	56 s / 44 s
Drive speed (km/h)	1 - 3,5 km/h
Turning radius - outside (m)	2,50
Gradeability (%)	23
Tires - non marking	15 x 5
Power source	24 V - 185 Amp/h
Weight (kg)	1950

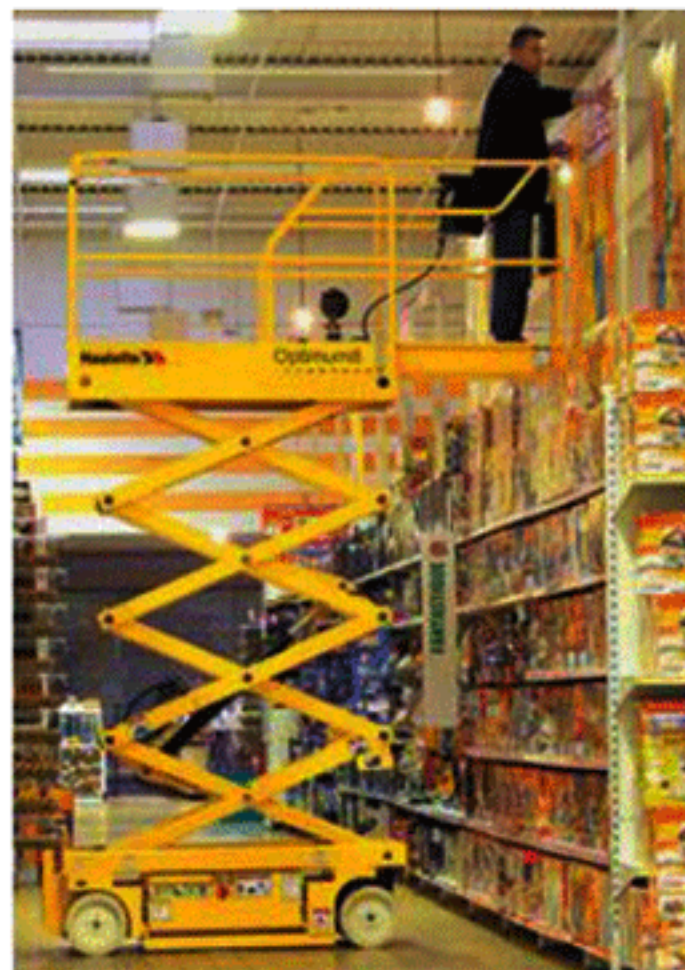
# Compact RTE



## Technical Data

Working height (m)	10,2
Platform height (m)	8,20
Lift capacity (kg)	565
Platform size - extended (m)	3,7 x 1,54 m
Height - stowed (m)	2,42
Storage height	1,50
Overall width (m)	1,80
Length (m)	2,65
Lift / lower speed (s)	40 s / 35 s
Drive speed (km/h)	2,2 - 5,8 km/h
Turning radius - outside (m)	3,73
Gradeability (%)	25
Tires - non marking	26 x 12 - 12
Power source	48 V - 255 Amp/h
Weight (kg)	3380

# Optimum 6

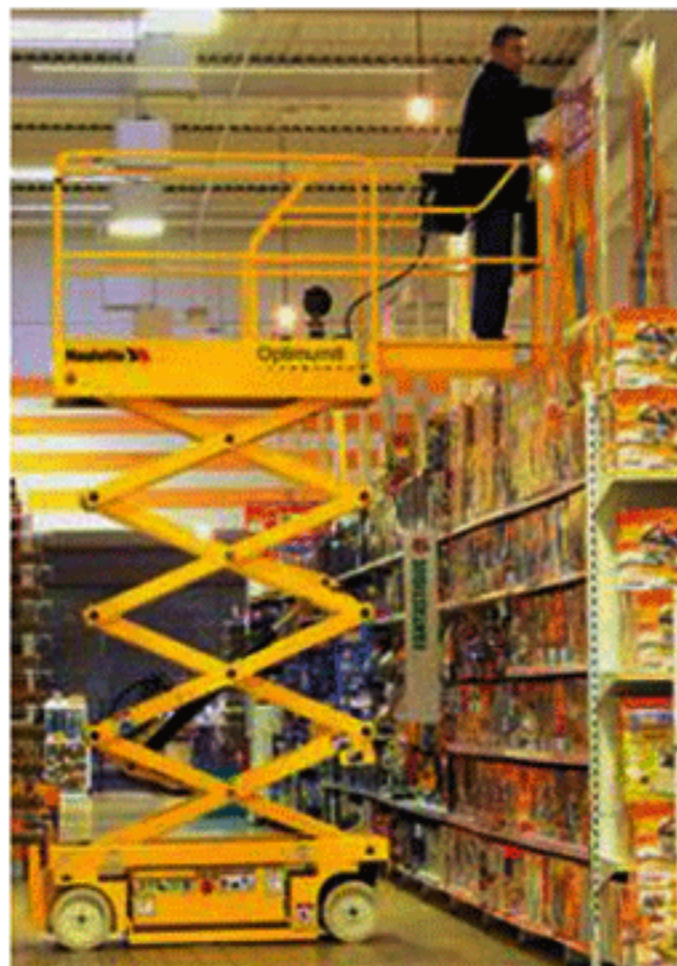


## Technical Data

Working height (m)	6,45
Platform height (m)	4,45
Lift capacity (kg)	270
Platform size - extended (m)	2,65 x 0,68 m
Height - stowed (m)	1,90
Storage height	1,90
Overall width (m)	0,76
Length (m)	1,88
Lift / lower speed (s)	35 s / 20 s
Drive speed (km/h)	0,6 - 4,5 km/h
Turning radius - outside (m)	1,70
Gradeability (%)	25
Tires - non marking	12,5 x 4,25
Power source	24 V - 185 Amp/h
Weight (kg)	1335



# Optimum 8



## Technical Data

Working height (m)	7,76
Platform height (m)	5,76
Lift capacity (kg)	230
Platform size - extended (m)	2,65 x 0,68 m
Height - stowed (m)	1,90
Storage height	1,90
Overall width (m)	0,76
Length (m)	1,88
Lift / lower speed (s)	35 s / 23 s
Drive speed (km/h)	0,6 - 4,5 km/h
Turning radius - outside (m)	1,70
Gradeability (%)	25
Tires - non marking	12,5 x 4,25
Power source	24 V - 185 Amp/h
Weight (kg)	1420